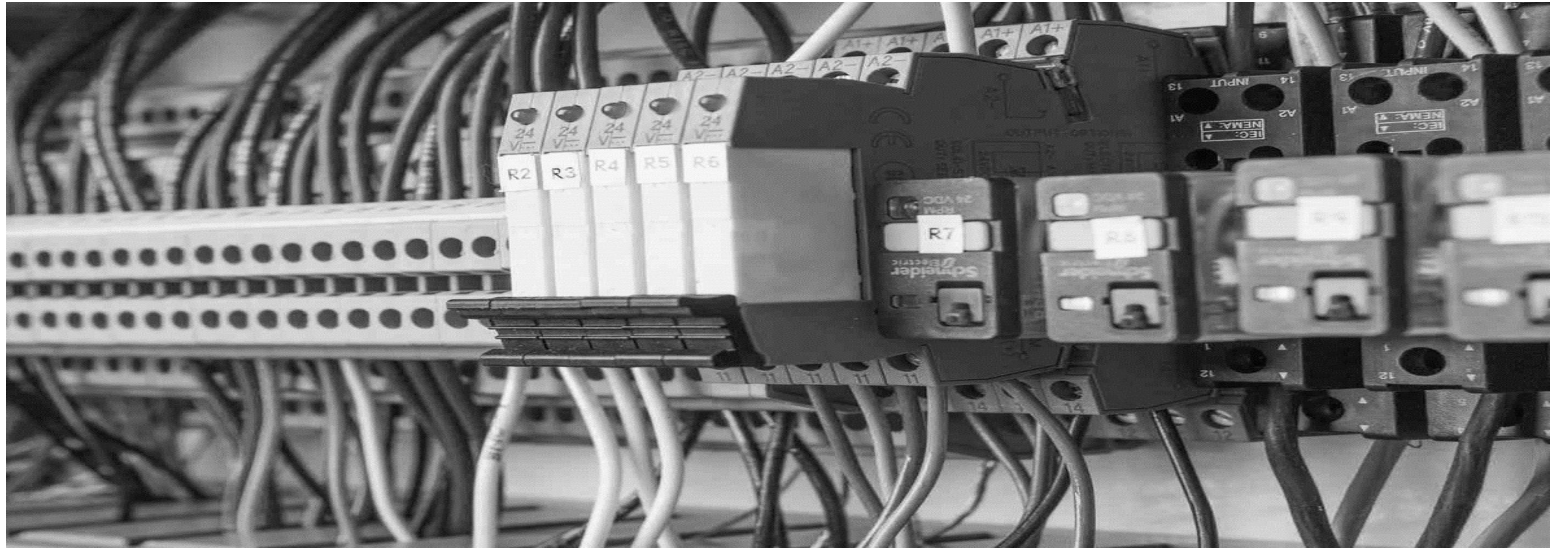


Branch: Installation of electrical equipment



Code: ELEFIT

Option: Electrical fitter

Level : CP

Prerequisites : Primary school leaving certificate

Opportunities :

Electricians may work in building and civil engineering companies or in electricians' workshops. They may consider setting up on their own.

Description

The electrical fitter installs the necessary electrical installations for lighting, heating, air-conditioning, alarm systems or surveillance systems. Based on the building plans and assembly diagrams, he traces the location of all the elements of the installation, runs the cables and wires, installs the electrical panels, supports, sockets and flush-mounted boxes. At the end of the work, he carries out safety checks before switching on the installation. The electrical fitter also carries out maintenance and repairs on installations. He may also work on larger sites before installing an intercom system, air conditioning in offices, or building management systems (automatic control of lighting and heating). You may also be involved in the installation of lifts, conveyor belts and communication, monitoring or signalling systems.

You will learn to install electrical cables, sockets, switches and circuit breakers, to make simple equipment (digidodes, timers, etc.) or to work on electrical

cabinets. Theoretical teaching will cover mathematics, electrical engineering, industrial electricity, calculations of resistance, current, power, wire diameter, etc.

Quality and competences :

Knowledge of electronics, electrical engineering, networks and communication circuits.