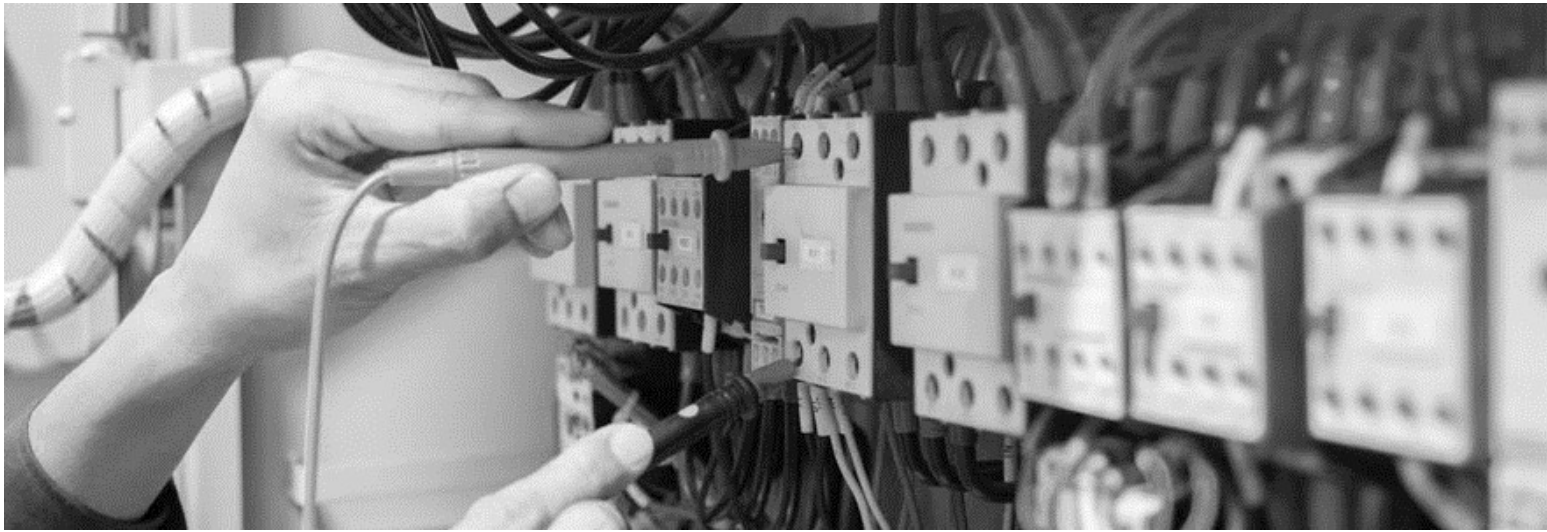


Branch: Microtechniques



Code: EQUIPM

Option: Equipment

Level : BEP

Prerequisites: BEPC and/or CAP

Opportunities :

In small, medium and large industrial companies that have in common the characteristic of manufacturing small parts, assembling small devices used in a wide variety of sectors: aeronautics, automotive, telecommunications, office automation, electronics, watchmaking, toys, medical and surgical instrumentation.

Description

To manufacture parts, assemble sub-assemblies of mechanisms (flight instruments, optical parts, clocks and watches, household appliance controls, remote control boxes, toy mechanisms, cameras, prosthesis components).

Using traditional or numerically controlled machine tools (lathes, milling machines, drilling machines). The use of traditional machines requires manual skill, whereas numerically controlled machine tools call for analytical and logical skills in assembling the various elements of a mechanism, which may be mechanical, electrical or electronic, from an overall drawing, assembling and disassembling small mechanisms in order to find a fault and remedy it.

Quality and competences :

1

mathematics. They are able to move from a two-dimensional to a spatial representation.

He/she should not have major difficulties in French, i.e. be able to understand a basic message and construct a simple sentence.

2

2